



REALTY GROUP



3/19 Elizabeth Close Appin NSW

4 3 2

This monstrous 4-bedroom unique, double-storey property really does epitomize modern living where the ground floor welcomes you with a spacious, open-plan family living and dining area. Centrally located in the heart of Appin all within 100 meters to the primary school, an array of shops as well as the bus stop. Current rent would achieve approximately \$700 - \$750 p/wk based on local comparables.

Price : \$ 845,000
Land Size : 381 sqm
View : <https://www.zrealtygroup.com.au/sale/nsw/southern-highlands/appin/residential/house/7843973>

This property features:

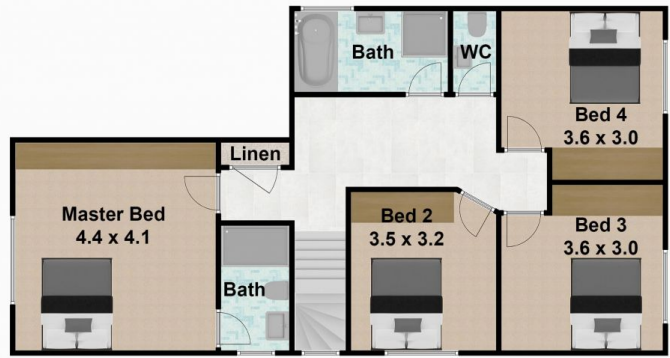
- * 4 Generous sized bedrooms with built ins to all
- * 3 Modern tiled bathrooms
- * Oversized double remote-controlled garage - drive thru with internal access
- * Open plan living and dining
- * Separate formal lounge room at the entry
- * Tiled alfresco area overlooking low maintenance yard



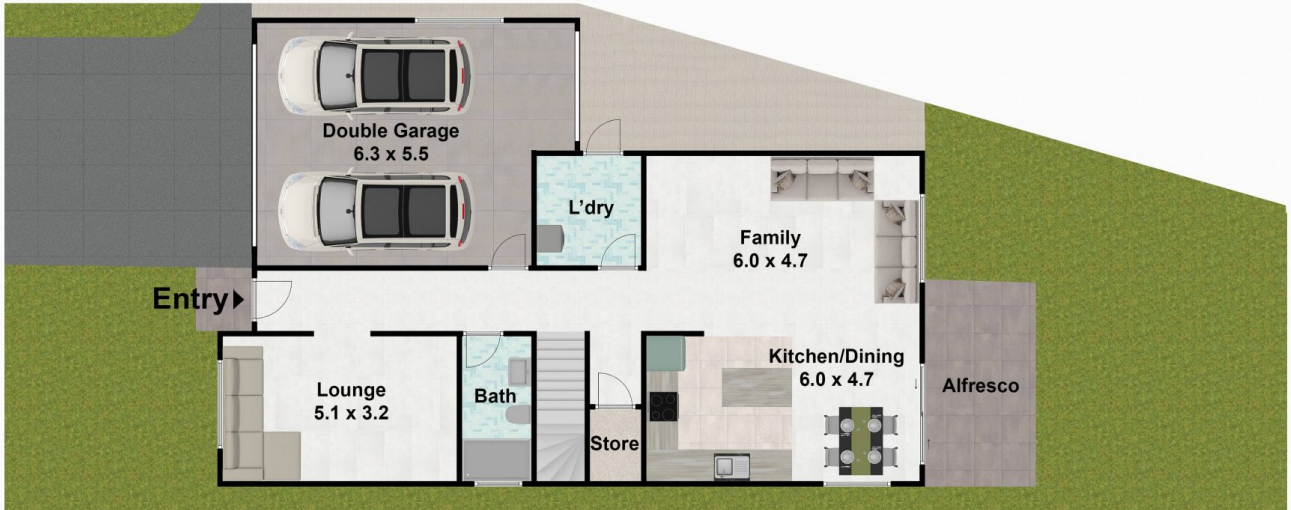
Derek Stone
02 4610 7980

<https://www.zrealtygroup.com.au>

FIRST FLOOR



GROUND FLOOR



3/19 Elizabeth Close, Appin NSW 2560



DISCLAIMER: THIS IS FOR ILLUSTRATIVE PURPOSES ONLY. ALL DIMENSIONS ARE APPROXIMATE AND IT DOES NOT CONSTITUTE PART OF ANY LEGAL DOCUMENT. All dimensions are approximate. Actual dimensions may vary.

REALTY GROUP