



REALTY GROUP



21 Collaroy Road Woodbine NSW

6 3 3

Here we have an absolute masterpiece of a meticulous owner/builders craftmanship. Sitting in a commanding position, high on the hill with 180 district degree views from multiple rooms. The north facing balcony is your personal observation deck, providing stunning views as you watch the world go by as you enjoy a morning cup of coffee, or a relaxing beverage as the sunsets. This unique full brick home is as rare as hens' teeth in the Macarthur region and guarantees to impress from the moment you enter through the double doors. It houses soaring 10-foot ceiling height over both expansive levels. Nestled just 200 metres from the service road that will have you on your way driving onto the Hume Highway navigating towards Sydney. with Six monstrous bedrooms, or currently used as five plus a large office room there really is a space for everyone to find their

Type : House
Price : \$ 1,310,000
Land Size : 566 sqm
View : <https://www.zrealtygroup.com.au/sale/nsw/macarthurcamden/woodbine/residential/house/8122056>

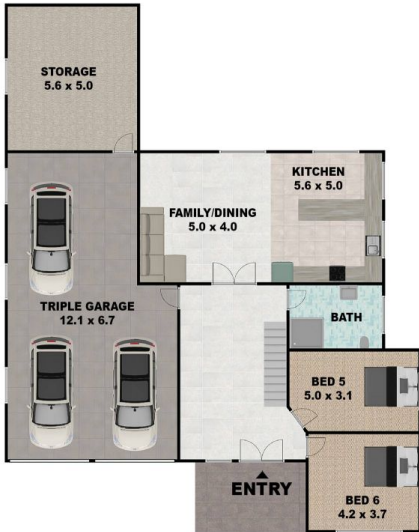


Derek Stone
02 4610 7980

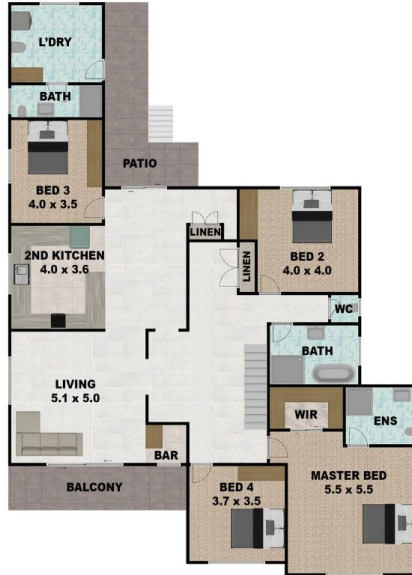
[For full version visit the website](https://www.zrealtygroup.com.au)

<https://www.zrealtygroup.com.au>

GROUND FLOOR



FIRST FLOOR



SITE PLAN



21 COLLAROY ROAD, WOODBINE NSW 2560

DISCLAIMER: THIS IS FOR ILLUSTRATIVE PURPOSES ONLY. ALL DIMENSIONS ARE APPROXIMATE AND IT DOES NOT CONSTITUTE PART OF ANY LEGAL DOCUMENT.
All dimensions are approximate. Actual dimensions may vary.

